

PUBLIC AUCTION

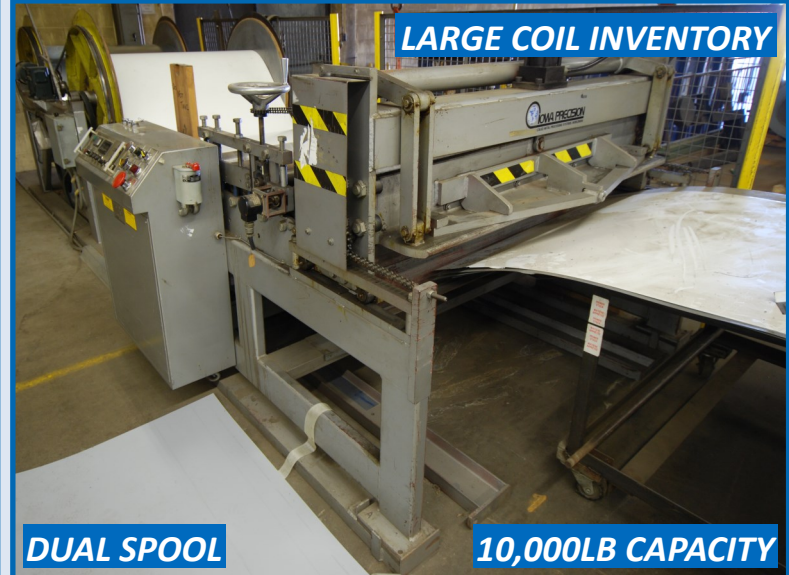
RAPID REFRIGERATION MFG. CO. LTD.

Complete Refrigeration Manufacturing Facility

1550 Birchmount Rd., Scarborough, Ontario



SAMPSON HYDRAULIC BOX & PAN BRAKE



IOWA PRECISION CUT-TO-LENGTH SYSTEM



PARTIAL VIEW OF INDUSTRIAL FRIDGES & FREEZERS



TRUMPF TRUMATIC 240 CNC PUNCH

Auction: Tuesday November 8, 10:30AM (ET)

Inspection: Monday November 7, 9 AM to 4 PM

**Bid Live Onsite
& Online Via
BidSpotter.com**



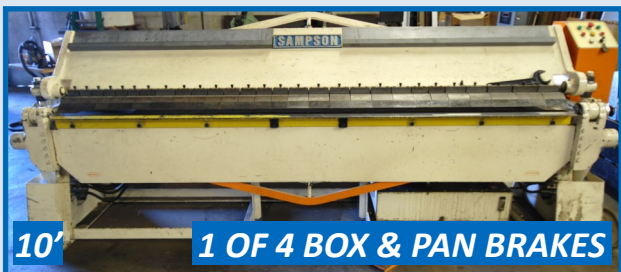
INFINITY
Asset Solutions

infinityassets.com

**AUCTIONEERS
APPRAISERS • FINANCIERS**
...and a lot more!

63 Maplecrete Road, Concord, Ontario L4K 1A5 Canada
Tel: (905) 669-8893 • Fax: (905) 669-7512

FABRICATION DEPARTMENT



10' **1 OF 4 BOX & PAN BRAKES**

SAMPSON HYDRAULIC BOX & PAN BRAKE



28 TON CAP.

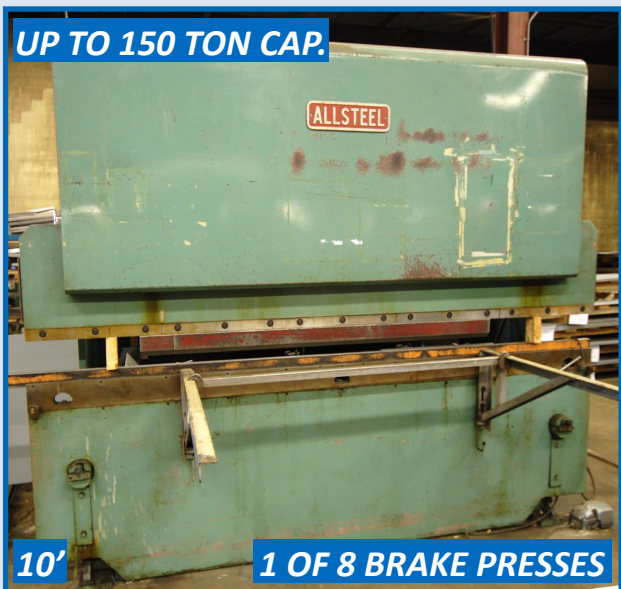
TRUMPF TRUMATIC 240 CNC PUNCH



3/16" CAP.

12' **1 OF 5 SHEARS**

CINCINNATI 14 MECHANICAL SHEAR



UP TO 150 TON CAP.

10' **1 OF 8 BRAKE PRESSES**

ALLSTEEL 45-10 HYDRAULIC BRAKE PRESS, 45 TON CAP.



DUAL SPOOL

10,000LB CAP.

IOWA PRECISION CUT-TO-LENGTH SYSTEM



2 AVAILABLE

PIERCE-ALL 3025A HYDRAULIC PUNCH



18GA CAP.

8' **1 OF 3 HAND BRAKES**

MOODY HAND BRAKE



10,000LB CAP.

LITTELL UNCOILER

Iowa Precision Cut-to-Length System: **Iowa Precision** D2S60 (2) Spool Uncoiler, 10,000lb Cap., **Iowa Precision** ESB6016 5' Feeder/Shear, s/n 109115 w/ AS3 Shear Controller
Sampson 10' Hydraulic Box & Pan Brake
Trumpf Trumatic 240 CNC Punch, 28 Ton Cap., s/n 9067
(2) **Pierce-All Perf-o-mator** 3025A Hydraulic Punch, s/n's 8699-532, n/a
Littell No. 90-36 Uncoiler, 10,000lb Cap., 20"-24" I.D., 46" O.D., s/n S-6773-73
Niagara 412 12' Mechanical Shear, 16ga Cap., s/n 38474
Cincinnati 14 12' Mechanical Shear, 3/16" Cap., s/n 34365
Brown Boggs 13121 10' Shear, 18ga Cap., s/n 12271
Brown Boggs 297A 8' Shear, 16ga Cap.
Niagara 4' Foot Operated Shear
KVS WC-2 Wire Rod Shear
The Lodge & Shipley Co. S150A10 12' Brake Press, 150 Ton Cap., 3.5" Stroke, 12" Shut Height, s/n 45071
Chicago 1012-L 12' Mechanical Brake Press, 90 Ton Cap., s/n L-14619
Allsteel 45-10 10' Hydraulic Brake Press, 45 Ton Cap., s/n 503
Lennox 45-10 10' Mechanical Brake Press, 45 Ton Cap., 14ga, 3" Stroke, s/n 10156
Sturdybender B-8 10' Mechanical Brake Press, 10ga, s/n 4736
Cincinnati 2-30 6' Brake Press
Niagara IB-15-3-4 4' Brake Press, 15 Ton Cap., 16ga, 2" Stroke, 11/2 Ram Adj., 8" Shut Height, s/n 43953
Chicago 131 4' Brake Press, 11 Ton Cap., 18ga, s/n LW12174
Chicago BPO-1014-6 10' Box & Pan Hand Brake, 20ga Cap., s/n 323156-M
Chicago W38 10' Box & Pan Hand Brake, s/n 107570
Chicago W37 8' Box & Pan Hand Brake, 18ga Cap., s/n 112618
Moody 8' Hand Brake, 18ga Cap.
Brown Boggs 8' Hand Brake, s/n 11512A

*Visit
infinityassets.com
to view complete
specs &
additional photos*

28" THROAT



1 OF 4

WHITNEY-JENSEN PUNCH



1 OF 5

28-STATION TURRET PUNCHES

WIEDEMANN RA61P TURRET PUNCH



PEDDINGHAUS

IRON WORKER

Chicago No. 27 4' Hand Brake, 27ga Cap., s/n 86727
 (2) Whitney-Jensen Punches, 24" Throat, s/n 171-2/69, n/a
 (2) Whitney-Jensen Punches, 18" & 11" Throat
 Wiedemann RA61P Turret Punch, 28-Station Turret, s/n 349
 Wiedemann R2 Manual Turret Punch, 12-Station Turret, s/n 2317
 Wiedemann Turret Punch, 12-Station Turret
 Alceco Manual Turret Punch, 12-Station Turret, s/n 20949
 Di-Acro VT/19P Turret Punch, s/n 065037386
 (15) All Canadian Engineering Co. Ltd., Brown Boggs, Roussele & Alceco Presses, 15-60 Ton Cap.
 Jones & Atwood 6B9/4 Pin Press, 6 Ton Cap.
 Ford Smith Pin Press
 Empro 610-1146 6-Head Multi Stage Pneumatic Notcher
 The Little Black Smith 430 Pneumatic Notcher
 Di-Acro No. 1 Manual Notcher, 16ga Cap.
 Ruoff Notcher
 Peddinghaus 210/11 Iron Worker, s/n FF2188
 Trumpf TAS 500 Mechanical Nibbler, 60" Throat, s/n 589
 Pines 11' Tube Bender, s/n MC 173
 Custom Hydraulic Bender
 Lockformer 10-Station Roll Former
 Brown Boggs No. 22 Beveller



15-60 TON CAP.



15 AVAILABLE

PARTIAL VIEW OF ALL CANADIAN ENGINEERING, BROWN BOGGS, ROUSSELLE, & ALCECO PRESSES



60" THROAT

TRUMPF TAS 500 MECHANICAL NIBBLER

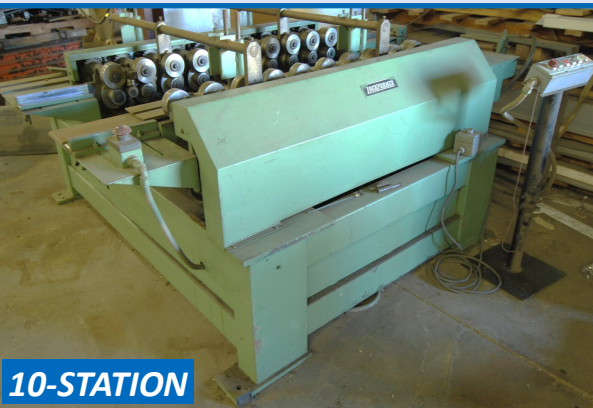


1 OF 4 NOTCHERS

EMPRO 610-1146 MULTI STAGE PNEUMATIC NOTCHER

BidSpotter.com

Or Bid By Proxy



10-STATION

LOCKFORMER ROLL FORMER



JONES PIN PRESS



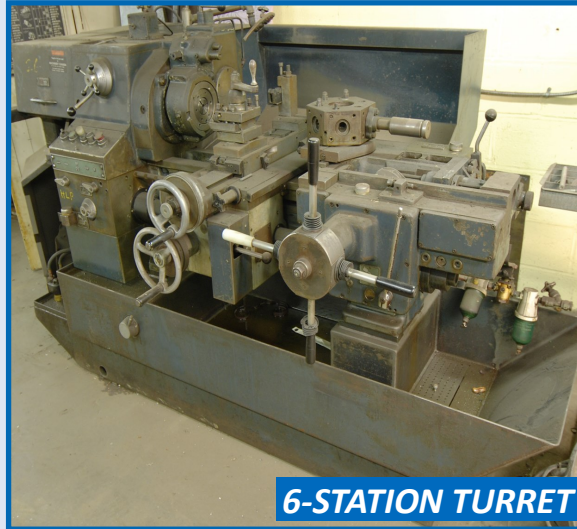
PINES MC 173 TUBE BENDER

MACHINE SHOP



2 AVAILABLE

ZUBAL PATENADO NO. 215810 ENGINE LATHE



6-STATION TURRET

HERBERT 2 SENIOR TURRET LATHE

Herbert 2 Senior Turret Lathe, Collet Style Chuck, 6-Station Turret, 12" Swing, 36" Bed, 1.5" Bore

(2) **Zubal Patenado No. 215810 Engine Lathe**, 10" 4 Jaw & 8" 3 Jaw Chucks, 16" Swing, 32" Between Centers, Tailstock, Speeds to 1,600 RPM, 1.75" Bore

The Sebastian Lathe Co. Engine Lathe, 8" 3 Jaw Chuck, 12" Swing, 30" Between Centers, Speeds to 620 RPM, Tailstock, 1" Bore

Ex-cell-o 602 Milling Machine, 9" x 36" Table, Speeds to 3,800 RPM, s/n 6024479

Sima Novara Rossi-Vo Milling Machine, 9" x 48" Table, Speeds to 360 RPM, s/n 808

2007 **Shur-Lift 3000 Series Shop Press**, 4" Bore, 8" Stroke

Lockformer 243 Vertical Bandsaw, s/n 3152

Clark-Demill Co. No. 1839 Vertical Bandsaw

Craftsman 12" Vertical Bandsaw

Vertical Bandsaw
Horizontal Bandsaw

Burgmaster Turret Drill Press, 6-Head, s/n 3101-204

Canadian 18" Drill Press

Canadian 716 Drill Press

Craftsman 15 1/2" Drill Press

Nider N164 Drill Press, s/n 6625467

Buffalo No. 15 Drill Press
Walker Turner 5" x 10" Surface Grinder
Rockwell/Delta Chop Saw
Rexon RDM C10 Chop Saw, s/n 1



1 OF 2 MILLS

SIMA NOVARA MILLING MACHINE



1 OF 5 BANDSAWS

LOCKFORMER VERTICAL BANDSAW



6 HEAD

BURGMASTER TURRET DRILL



1 OF 5

NIDER DRILL PRESS



5" X 10"

WALKER TURNER SURFACE GRINDER



ROCKWELL/DELTA CHOP SAW

Visit
infinityassets.com
to view complete
specs &
additional photos

WELDING



UP TO 50KVA

9 AVAILABLE

PARTIAL VIEW OF SPOT WELDERS

- Progressive EA50-24-C Spot Welder, 50KVA**
- English Electric 50RAAC-18 Spot Welder, 40KVA**
- Weld-o-matic AS Spot Welder, 25KVA, 24" Throat, s/n 1483**
- Peer AR-425 Spot Welder, 25KVA, 18" Throat, s/n 12157**
- Weld-o-matic 176 Spot Welder, 20KVA**
- Precision ARA1 Spot Welder, 10KVA, 18" Throat, s/n 265095**
- Taylor Winfield Spot Welder, 10KVA, 18" Throat**
- Holden & Hunt No. 2 Spot Welder, 7.5KVA, 12" Throat, s/n 7016**
- Taylor Winfield Press Welder, 20KVA**
- Robotron HB2 Rod/Butt Welder, 15KVA, s/n 7027**
- Robotron 6C3032HX-VR29 T-Welder, s/n C2828-1**
- Robotron Custom 4-Head Roller Welder**
- Miller CP-250TS Welder w/ Hobart Wire Feeder**
- Lincoln TA-413274 Arc Welder**
- Airco PA-3 Welder**
- Arcweld 250A Welder**



PARTIAL VIEW OF WELDERS

WOOD WORKING



4 TABLE SAWS AVAILABLE



5 RADIAL SAWS AVAILABLE



15"

MANCHU AUTO PLANER



2002

GENERAL INTERNATIONAL 40-250M1 ROUTER



6"

2 AVAILABLE

RIDGID JOINTER



6"

WINTERSTEIGER SANDER

- (3) Rockwell/Delta 10" Table Saws**
- Trademaster TMWC-105M 10" Table Saw**
- Dewalt E500149 Radial Arm Saw, s/n 62050084**
- Craftsman 10" Radial Arm Saw**
- Rockwell/Delta Radial Arm Saw**
- Beaver 28-200 Vertical Bandsaw, s/n 360207**
- King Canada 14" Vertical Bandsaw**
- Manchu SA-380N 15" Auto Planer, s/n 8610095**
- 2002 General International 40-250M1 Router**
- Busy Bee B088 Wood Shaper, s/n 006523**
- Ridgid 6" Jointer**
- Beaver 3800 6" Jointer, s/n 6071**
- Wintersteiger CBM360 6" Belt Sander**
- Atlas 5010 Belt/Disc Sander, 9" Disc, 6" Belt, s/n 8767**
- Belt/Disc Sander, 9" Disc, 6" Belt**



13" X 65" OPENING

INTERCOAT POWDER COAT PAINT SYSTEM



2,500,000 BTU

TEM-PRO NATURAL GAS BAKE OVEN



3-STAGE

TEM-PRO WASH LINE



9' X 8' X 9'

BINKS PAINT SPRAY BOOTH



500,000 BTU

14' X 7' X 10'

TEM-PRO BATCH OVEN



JENNINGS FOAM SYSTEM



CANNON FOAM SYSTEM



PARTIAL VIEW OF INSULATED PANEL JIGS



MANY AVAILABLE

PAINT DEPARTMENT

Complete **Tem-Pro** Paint Line: **Intercoat** Powder Coat Paint System, 13" x 65" Opening x 15'L w/ Guns & Paint Reclaim System, **Tem-Pro** 2,500,000 BTU Conveyorized Nat. Gas Bake Oven, (3) 6' x 42" Openings x 40'L, **Tem-Pro** Conveyorized 3-Stage Wash Line, 66" x 42" Openings x 50'L, Approx. 200' Chain Conveyor Throughout, Air Make-up Unit, Control Panels, etc.

Binks Paint Spray Booth, 9'L x 8'W x 9'H
Tem-Pro Batch Oven, 14'L x 7'W x 10'H,
500,000 BTU

FOAMING DEPARTMENT

Jennings Foam System w/ Holding Tank
Cannon Foam System
(6) Horizontal Insulated Panel Jigs
(3) Vertical Insulated Panel Jigs
Insulated Corner Jig
Plus: Many Other Jigs Available

Visit
infinityassets.com
to view complete
specs &
additional photos



8,000LB CAP.

KALMAR ACC 80L 2PS FORKLIFT



5 TON CAP.

3 AVAILABLE

LOAD LIFTER BRIDGE CRANE



4,000LB CAP.

BLUE GIANT 5' X 3' ELECTRIC LIFT TABLE

MATERIAL HANDLING

Kalmar ACC 80L 2PS Propane Forklift, 8,000lb Cap., 140" Max Lift, s/n 650156
Load Lifter Approx. 23' Bridge Crane, 5 Ton Cap. (Bridge Only)
(2) Approx. 23' Bridge Cranes, 6,000lb & 3,000lb Cap. (Bridge Only)
Economy Hijacked Telescopic Work Platform, 500lb Cap.
Blue Giant 5' x 3' Electric Lift Table, 4,000lb Cap.

Visit www.infinityassets.com to view more photos of finished product, WIP & Refrigeration Parts

60+ INDUSTRIAL FRIDGES, FREEZERS, MEAT COUNTERS & WIP

NEW FINISHED INVENTORY



HEAT EXCHANGERS, COPPER TUBING, GLASS PANELS, COMPRESSORS & COOLING FANS

PLANT SUPPORT EQUIPMENT



3 COMPRESSORS AVAIL.

PARTIAL VIEW OF COMPRESSORS



2 AVAILABLE

USM CLICKER PRESS



GPI DIVISION BALER

Sullair 12450H 50HP Air Compressor
Curtis Webster 50HP Air Compressor
Broomwade EP660 25HP Air Compressor
Pure-Aire Inc. PS 250 Air Dryer, s/n 4617
GPI Division M60STD Baler, s/n 60508STD
USM FF 7187 Clicker Press, 30" x 19" Bottom Plate, 24" x 18" Top Plate
Atom SPA G22 Siva Clicker Press, s/n 75124



PARTIAL VIEW OF PNEUMATIC & POWER TOOLS



J.L. Morrison 4' Manual Material Shear
LARGE Offering of Sheet Metal & Coil Stock
(85)Section of Pallet Racking
Plus: Pneumatic & Power Tools, Carts, Racking, Work Benches, Die Lifts, Raw Material, Copper, Aluminum, Stainless & Steel Stock, Employee Lockers, Metal Shelving, Brake Press Dies, Dollies, Offices, Pallet Jacks, Engine Hoists, Parts Cribs, Wood, Press Dies, Punch Dies, Motors, Blowers, Welding Supplies, Toolboxes, Industrial Cafeteria Equipment, and Much More!



LARGE OFFERING OF SHEET METAL AND COIL STOCK

TERMS OF SALE   

Payment: All payments must be in Cash, Certified Funds, Wire Transfers, or Company Checks, which must be accompanied with a bank letter guaranteeing irrevocable payment to Infinity Asset Solutions Inc. Invoices up to \$2,000 can be paid by Visa, Mastercard or Interac.

All Online bidders must register on Bidspotter by 5pm Monday November 7.

A 15% buyers premium will be added to all onsite purchases (18% Online).

A \$500 refundable security deposit is required upon onsite registration (\$2,000 Online).

A 25% deposit is required at time of purchase, balance due by 4pm Wednesday November 9, 2016. NO EXCEPTIONS.

All goods are sold "As Is, Where Is", ALL SALES ARE FINAL. All subject to prior sale. Complete terms and conditions including removal procedures, are available on our website and will be provided at the time of registration.

This brochure is meant merely as a guide. Infinity Asset Solutions makes no guarantee, expressed or implied, as to the accuracy of the information in this brochure. Buyers should inspect the goods beforehand to satisfy themselves.

REMOVAL TIMES

All items by Friday November 18, 2016.

Hours: Monday—Friday between 8 am—4 pm.

No items may be removed during auction. NO EXCEPTIONS

DIRECTIONS: From Toronto Pearson Intl Airport to 1550 Birchmount Rd., Scarborough, ON. Get onto ON-409 E. Merge onto ON-401 E. Take the Warden Ave. S Exit. Turn Left onto Warden Ave. Turn Left onto Ellesmere Rd. Turn Right onto Birchmount Rd. Destination will be on the Right.

Bid Live Onsite & Online Via BidSpotter.com

Member In Good Standing Of:



• AUCTIONS • LIQUIDATIONS
 • FINANCING • APPRAISALS

63 Maplecrete Road, Concord, Ontario L4K 1A5 Canada

infinityassets.com • Tel: (905) 669-8893 • Fax: (905) 669-7512